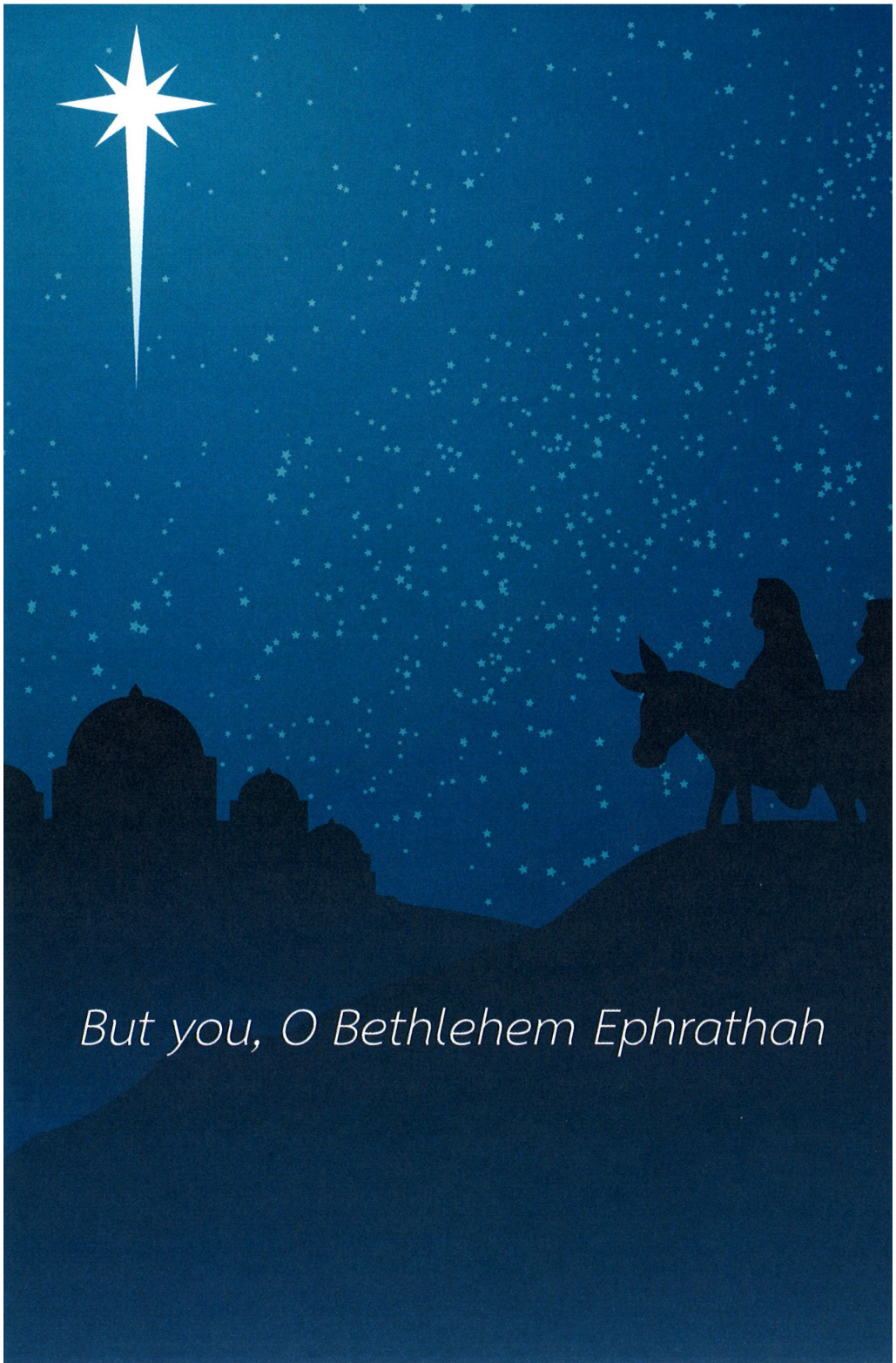




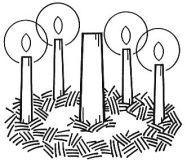
# Christ Evangelical Lutheran Church

W240 N3103 Pewaukee Road, Pewaukee, WI 53072

Phone: 262-691-0720 Email: [office@christpewaukee.org](mailto:office@christpewaukee.org)



*But you, O Bethlehem Ephrathah*



# 4<sup>th</sup> Sunday in Advent

December 23, 2018

**Worship Leader:** Pastor Thomas Engelbrecht  
**Preacher:** Pastor Timothy Gerbing

**Prayer:** Lord God, we praise you that you comforted your people with the promise of a Redeemer. We praise you that in the fullness of time you sent your only Son as a tiny baby to be the Redeemer of all people. We praise you that Jesus will come again to judge the world in righteousness. Open our eyes in awareness to his rule in our lives by his grace. Make Advent a blessing to us as we welcome our King anew in faith and love. We pray this in his name. Amen.

## “Oh, Come, Oh, Come, Emmanuel”

*Please stand to sing the final stanza.*



1 Oh, come, oh, come, Em - man - u - el, And ran - som cap - tive  
2 Oh, come, O Root of Jes - se, free Your own from Sa - tan's  
3 Oh, come, O Day-spring from on high, And cheer us by your  
4 Oh, come, O Key of Da - vid, come, And o - pen wide our



Is - ra - el That mourns in lone - ly ex - ile here  
tyr - an - ny; From depths of hell your peo - ple save,  
draw - ing nigh; Dis - perse the gloom - y clouds of night,  
heav'n - ly home. Make safe the way that leads on high,



Un - til the Son of God ap - pear.  
And bring them vic - t'ry o'er the grave. Re-joyce! Re-joyce!  
And death's dark shad - ows put to flight.  
And close the path to mis - er - y.



Em - man - u - el Shall come to you, O Is - ra - el!

## INVOCATION

P: We worship in the name of the Father and of the Son (†) and of the Holy Spirit.

C: **Amen.**

## CONFESSION OF SINS AND FORGIVENESS

P: Dear friends, let us approach God with a true heart and confess our sins, asking him in the name of our Lord Jesus Christ to forgive us.

C: **Lord of life, I confess that I am by nature dead in sin. For faithless worrying and selfish pride, for sins of habit and sins of choice, for the evil I have done and for the good I have failed to do, you should cast me away from your presence forever. I am sorry for my sins. Forgive me, for Jesus' sake.**

P: Christ has come, and he will come again. In his great mercy, God made us alive in Christ even when we were dead in our sins. Hear the word of Christ through his called servant: I forgive you all your sins in the name of the Father and of the Son (†) and of the Holy Spirit.

C: **Amen.**

*Be seated*

## ADVENT CANDLE LIGHTING

*(all sing)*

**“Oh, Christians, praise!” God’s mighty Word  
Proclaims the coming of the Lord.  
Let us with joy our hearts prepare  
For Christ to come and enter there.**

P: Even in the darkness of life’s chaos and confusion, the light of God’s promise shines brightly forth. The PROPHECY CANDLE assures us that, in the coming of Jesus Christ, our God does keep his word.

C: **When these things begin to take place, stand up and lift up your heads because your redemption is drawing near.** (Luke 21:28)

P: The BETHLEHEM CANDLE bids us hear the Word of God with penitent and faithful hearts, and so to make ready for the coming of the Lord.

C: **It is written in Isaiah the prophet: “A voice of one crying in the desert: Prepare the way for the Lord.”** (Mark 1:2, 3)

- P: The SHEPHERD'S CANDLE shines with joy, a message to be heard and shared, that others may rejoice as well.
- C: One more powerful than I will come. He will baptize you with the Holy Spirit and with fire.** (Luke 3:16)
- P: The ANGELS' CANDLE brings us near the love of God in Jesus Christ, proclaiming the eternal hope we have in his coming.
- C: Blessed are they who believe that there will be a fulfillment of what was spoken to them from the Lord!**
- P: May the glow of these candles symbolize the light of God's love and grace in Jesus Christ, shining in us by the power of the Holy Spirit. May our paths be lighted with his peace, not only now, but all the days of our lives.

*(all sing)*

**On Jordan's bank the Baptist's cry  
Announces that the Lord is nigh.  
Almighty God, our prayer attend:  
Salvation's light and blessing send!**

## **OLD TESTAMENT LESSON**      *Micah 5: 2-5a*

"But you, Bethlehem Ephrathah,  
though you are small among the clans of Judah,  
out of you will come for me  
one who will be ruler over Israel,  
whose origins are from of old,  
from ancient times."

Therefore Israel will be abandoned  
until the time when she who is in labor bears a son,  
and the rest of his brothers return  
to join the Israelites.

He will stand and shepherd his flock  
in the strength of the LORD,  
in the majesty of the name of the LORD his God.  
And they will live securely, for then his greatness  
will reach to the ends of the earth.

And he will be our peace  
when the Assyrians invade our land  
and march through our fortresses.

# EPISTLE LESSON

Hebrews 10: 5-10

Therefore, when Christ came into the world, he said:

“Sacrifice and offering you did not desire,  
but a body you prepared for me;  
with burnt offerings and sin offerings  
you were not pleased.

Then I said, ‘Here I am—it is written about me in the scroll—  
I have come to do your will, my God.’”

First he said, “Sacrifices and offerings, burnt offerings and sin offerings you did not desire, nor were you pleased with them”—though they were offered in accordance with the law. Then he said, “Here I am, I have come to do your will.” He sets aside the first to establish the second. And by that will, we have been made holy through the sacrifice of the body of Jesus Christ once for all.

## “A Great and Mighty Wonder”



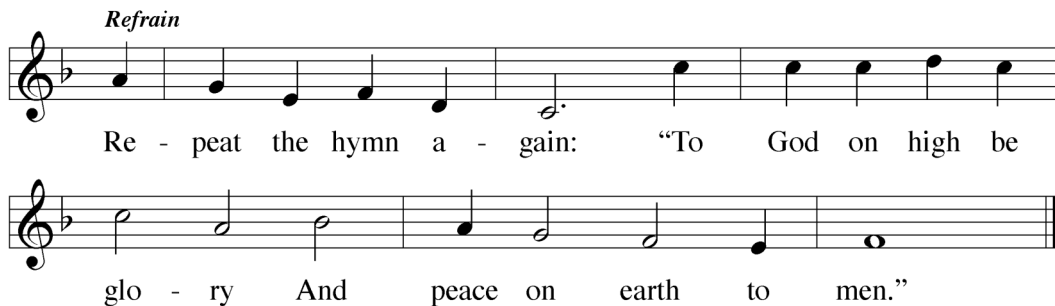
1 A great and might - y won - der, A  
2 The Word be - comes in - car - nate And  
3 While thus they sing your mon - arch, Those  
4 Since all he comes to ran - som, By  
5 All i - dols then shall per - ish And



glo - rious mys - ter - y: A vir - gin bears an  
yet re - mains on high, And cher - u - bim sing  
bright an - gel - ic bands, Re - joice, O vales and  
all be he a - dored, The in - fant born in  
Sa - tan's ly - ing cease, And Christ shall raise his



in - fant Who veils his de - i - ty.  
an - thems To shep - herds from the sky.  
moun - tains, And o - ceans, clap your hands.  
Beth - l'em, The Sav - ior and the Lord.  
scep - ter, De - cree - ing end - less peace.



**CHRIST KIDS** (10:30 am service)

**SERMON TEXT** Luke 1: 46-55

And Mary said:

"My soul glorifies the Lord  
and my spirit rejoices in God my Savior,  
for he has been mindful  
of the humble state of his servant.  
From now on all generations will call me blessed,  
for the Mighty One has done great things for me—  
holy is his name.  
His mercy extends to those who fear him,  
from generation to generation.  
He has performed mighty deeds with his arm;  
he has scattered those who are proud in their inmost thoughts.  
He has brought down rulers from their thrones  
but has lifted up the humble.  
He has filled the hungry with good things  
but has sent the rich away empty.  
He has helped his servant Israel,  
remembering to be merciful  
to Abraham and his descendants forever,  
just as he promised our ancestors."

**SERMON THEME** CELEBRATING CHRISTMAS THE RIGHT WAY

*Stand*

## THE APOSTLES' CREED

**I believe in God, the Father almighty,  
maker of heaven and earth.**

**I believe in Jesus Christ, his only Son, our Lord,  
who was conceived by the Holy Spirit,  
born of the virgin Mary,  
suffered under Pontius Pilate,  
was crucified, died, and was buried.**

**He descended into hell.**

**The third day he rose again from the dead.**

**He ascended into heaven**

**and is seated at the right hand of God the Father almighty.**

**From there he will come to judge the living and the dead.**

**I believe in the Holy Spirit,  
the holy Christian Church,  
the communion of saints,  
the forgiveness of sins,  
the resurrection of the body,  
and the life everlasting. Amen.**

*Be seated*

## GATHERING OF THE THANKOFFERING

*Stand*

### PRAYER

**P:** Eternal Father, throughout the centuries you repeated and affirmed your promise to send the offspring of the woman to crush the serpent's head. Through your prophets of old, you continually directed the eyes of your people to the coming of their Savior.

**C:** **We praise you, O Lord, for keeping your promise and sending your Son to destroy the works of the devil.**

**P:** As we prepare to celebrate the birth of our King, use your mighty Word to shatter our pride and to rouse us from spiritual apathy.

**C:** **Move us to take to heart the words of John: "Repent, for the kingdom of heaven is near."**

P: You sent your Son to redeem us from sin. Let this good news be our joy and strength. Use it to cheer the lonely, encourage the fearful, and give hope to the despairing. At this time before Christmas, spare us from the stress of deadlines and the frenzy of commercialism.

**C: Fill our lives with the message of your peace and the music of your grace.**

P: Direct our eyes not only to the manger but also to the skies, where we will see your Son coming again, not as a lowly child but as the Lord of lords.

**C: Lift up our hearts in joyful anticipation of that day.**

*(special prayers)*

P: Hear us, Lord, as we bring you our private petitions.

*(silent prayer)*

P: Come quickly, Lord Jesus, in your grace, in your power, and in your glory.

**C: Come, Lord Jesus! Amen.**

## **THE LORD'S PRAYER**

**C: Our Father in heaven, hallowed be your name, your kingdom come, your will be done on earth as in heaven. Give us today our daily bread. Forgive us our sins, as we forgive those who sin against us. Lead us not into temptation, but deliver us from evil. For the kingdom, the power, and the glory are yours, now and forever. Amen.**

## **THE BLESSING**

P: May the God of peace sanctify you through and through. May your whole spirit, soul, and body be kept blameless at the coming of our Lord Jesus Christ. The one who calls you is faithful and he will do it. (1 Thessalonians 5:23,23)

**C: Amen.**

*Be seated*

## “Savior of the Nations, Come”



1 Sav - ior of the na - tions, come; Vir - gin's  
 2 Not by hu - man flesh and blood, By the  
 3 Won - drous birth! O won - drous Child Of the  
 4 From the Fa - ther's throne he came And as -  
 5 Praise to God the Fa - ther sing, Praise to



Son, make here your home. Mar - vel now, O  
 Spir - it of our God Was the Word of  
 vir - gin un - de - filed, Though by all the  
 cend - ed to the same, Cap - tive lead - ing  
 God the Son, our King, Praise to God the



heav'n and earth, That the Lord chose such a birth.  
 God made flesh, Wo - man's off - spring, pure and fresh.  
 world dis - owned, Yet to be in heav'n en - throned!  
 death and hell— High the song of tri - umph swell!  
 Spir - it be Ev - er and e - ter - nal - ly.

## SILENT PRAYER

## ANNOUNCEMENTS

Scripture quotations are taken from the Holy Bible, New International Bible ® NIV ® Copyright 2011.  
 Hymns are from Christian Worship: A Lutheran Hymnal Electronic Pew Edition 03N3038,  
 © 2011 Northwestern Publishing House, Milwaukee, WI.

# Welcome!

---

If you are visiting, please sign the guest book in the gathering area and come back and worship with us soon! After signing the guest book, you are invited to join us for a cup of coffee or juice and refreshments after the Sunday morning service. We are happy to have you worship with us today. Please pick up a copy of our December newsletter, *The Crownical*. You'll find copies on the kiosk in the gathering area.

**Available Services:** There are restrooms in the coatroom area and the parents' room. Hearing Assistive Devices are available from an usher. We have both ear buds and loop FM receivers for those with hearing aids. Our ushers are glad to provide large print bulletins for those who need them.

**Attention Parents:** If you need a place to take a crying or noisy child during the service, you may use the parents' room adjacent to the sanctuary. You can hear and view the service there. You will find a diaper changing station in the parents' room and in both restrooms located in the coatroom area.

**Baptism Affirmation:** The baptism of Adalynn Gerda Ann Macpherson, daughter of Colin & Jessica Macpherson, was affirmed in our worship service yesterday. Pray that this young child will grow in the love and wisdom of our Savior.

**Karen Davis** died last week. Her Christian funeral will be held here at Christ on Thursday, December 27 at 11:00 am. A visitation will be held before the funeral starting at 10:00 am, and a meal will follow the funeral at 12:00 pm. Pray that her family will be strengthened and comforted through the resurrection promise of our Savior, "Because I live, you will live also."

**Thank You** to Janet Kieselhorst for serving as our organist/pianist today.

# *The Christmas Season*

## *at Christ Lutheran Church*

### **MONDAY, DEC. 24 — CHRISTMAS EVE**

Mid-Day Service 12:00 pm

Sunday School Children's Service 4:00 pm

Candlelight Service 11:00 pm

### **TUESDAY, DEC. 25 — CHRISTMAS DAY**

Service of Carols 9:30 am

### **SUNDAY, DEC. 30**

Worship Services 8:00 & 10:30 am

### **MONDAY, DEC. 31 — NEW YEAR'S EVE**

Worship with Lord's Supper 5:00 pm



## ***This Week at Christ Lutheran***

---

- Sunday:**      Worship Services 8:00 & 10:30 am  
Adult Bible Class 9:10 am  
Adult Sunday School 9:10 am  
Bible Information Class 9:10 am  
Sunday School Christmas Eve Rehearsal 9:10 am  
Teen Bible Study 9:10 am  
Christmas Worship Service at Erin School 5:00 pm
- Monday:**      **CHRISTMAS EVE**  
                 **Mid-Day Service 12:00 pm**  
                 **Sunday School Children's Service 4:00 pm**  
                 **Candlelight Service 11:00 pm**  
                 *Church Office Closed*  
                 *Lambs of Christ Closed through January 1*
- Tuesday:**      **CHRISTMAS DAY**  
                 **Service of Carols 9:30 am**  
                 *Church Office Closed*
- Wednesday:** *(No Worship Services)*
- Friday:**      Newsletter Collating 9:30 am
- Saturday:**    *(No Worship Services)*  
Barb Sloey & Karl Schildt Wedding 2:00 pm
- Sunday:**      Worship Services 8:00 & 10:30 am  
                 *(No Christian Education Classes)*  
Worship Service at Erin School 5:00 pm
- Monday:**      **NEW YEAR'S EVE**  
                 **Worship with the Lord's Supper 5:00 pm**  
                 *Church Office Closed*
- Tuesday:**      **NEW YEAR'S DAY**  
                 *Church Office Closed*

## News & Events

---

**Please note that there are no worship services** on Wednesdays, Dec. 26 & Jan. 2, nor Saturday, Dec. 29. Our regular Wednesday services will resume on Jan. 9 at 12:00 & 6:30 pm. Our regular Saturday services will resume on Saturday, Jan. 5 at 5:00 pm. Our regular Monday services will resume on Monday, Jan. 7 at 7:00 pm.

**Our Church Office will be closed** on Christmas Eve, Monday, December 24, Christmas Day, Tuesday, December 25, on New Year's Eve, Monday, December 31, and on New Year's Day, Tuesday, January 1.

**Our Lambs of Christ Learning Center** is closed until classes resume on Wednesday, January 2.

**Thank You!** Pastors and church staff would like to thank everyone for the many cards, gifts, and well wishes received from so many this Christmas season. May the Lord bless our common labors to spread the Good News of Jesus Christ into the new year and beyond!

**The Christmas Poinsettias** which beautify our church for the Christmas season may be purchased. Prices for different size plants vary between \$10-\$28. A signup sheet with more details is on the table in the gathering area with an attached envelope for your payment. The poinsettias may be taken home after our Christmas Day worship services.

**International Friendship Center:** New volunteer opportunities for our International Friendship Center (IFC) are available. Please see the signup sheet at kiosk in the gathering area. Join us as we reach out to our international neighbors through fun friendship-building activities! If you have any questions, contact IFC Coordinator Becca Berger at 262-302-1567 or [becca.berger2017@gmail.com](mailto:becca.berger2017@gmail.com).

**Hurricane Relief Volunteers:** Do you have some building skills, or are you willing to learn? Can you offer one or two weeks? Join us with cleanup and relief work in Puerto Rico and Panama City through WELS Christian Aid and Relief! To apply to serve as a volunteer, visit <https://gf.wels.net/volunteer-application/> and fill out the volunteer form. Travel, room, and board are provided by WELS CAR. Elbow grease is provided by you, the volunteer! Christ Lutheran has a group of volunteers heading to Panama City. Contact Pastor Engelbrecht if you have any questions about this group.

## ***Bible Studies***

---

**Please note** that there will be no Christian Education classes on Sunday, December 30.

**“Portraits of Christmas” Adult Bible Class:** We are considering “Portraits of Christmas.” We meet on Sundays at 9:10 am in the fellowship hall. Prepare your hearts for the coming of Christ. Everyone is welcome to join us! In January, Dr. John Lawrenz will be leading our class. He has been a professor at Wisconsin Lutheran Seminary and Asia Lutheran Seminary and is a Hebrew scholar. He will be teaching on the basics of the geography of Israel and Old Testament history.

**Sunday School:** All children age 3 through 8th grade are welcome to attend Sunday School classes in our lower level classrooms on Sundays, 9:10-10:10 am.

**Teen Bible Study** is held on Sundays at 9:10 am in the lower level teen room. All high school students are invited!

**Adult Sunday School** is held on Sundays at 9:10 am in the library and will follow the same lessons as the Sunday School children—a great class for Sunday School parents!

**Bible Information Class:** Review the fundamental teachings of the Christian faith as revealed in the Bible. This is an excellent class for anyone interested in becoming a member of our church and a good refresher course for members. Class meets weekly on Saturdays at 3:30 pm, Sundays at 9:10 am, Mondays at 5:30 pm, and Wednesdays at 5:30 pm. Please contact Pastor Warnecke if you have any questions.

**The Early Risers Bible Study** will resume meeting on Tuesday, January 8 at 8:00 am in the library to study I Corinthians.

**The Enduring Word Bible Study** will resume meeting on Thursday, January 10 at 9:00 am in the library. They are studying the Gospel of Matthew—God’s Promises Realized!

## *Job Openings at Lambs of Christ Learning Center!*

**Assistant Director Position:** A part-time position with flexible hours assisting director with daily administrative tasks as well as serving as a substitute teacher in our preschool on occasion. For more information and to apply contact Lambs of Christ Director Molly Brooks at 262-691-0720 ext. 150 or email her at [mbrooks@christpewaukee.org](mailto:mbrooks@christpewaukee.org).

**Substitute Teachers Needed:** Lambs of Christ is also looking for individuals willing to serve as substitute teachers should the need arise! If you have willingness to serve in this way, please contact Director Molly Brooks for more details.

**Volunteers:** You are also able to serve your Lord as an LCLC volunteer by helping with events, reading to children, cutting out paper for projects, washing toys, and many more tasks to make the school day flow smoothly. In advance, we thank you for sharing your time with the children. Contact Director Molly Brooks to learn more.

## **2019 OFFERING ENVELOPES**

**Members:** New 2019 offering envelopes are in your call boxes. Please discard any unused 2018 envelopes that you may have left. Please take a moment to check that the envelopes are yours and that the number printed on the label is identical to the number on the envelopes. If not, contact the church office. If you have any questions, please contact Gary Kamin at 262-691-0720, ext. 230.

Our offering counting volunteers ask that you **please write separate checks for the General Fund and Building Fund**. These funds are deposited into two separate bank accounts and it is difficult to “make change” to get a single check into two accounts. Thank you!

*Join us for a  
Christmas Service of Lessons and Carols*

**Sunday, December 23, 5:00 pm**

**Erin School Gymnasium**

*Rejoice with us in the prophets fulfilled, the greatest gift given, and the hope that is ours because of the birth of Jesus Christ, the Son of God*



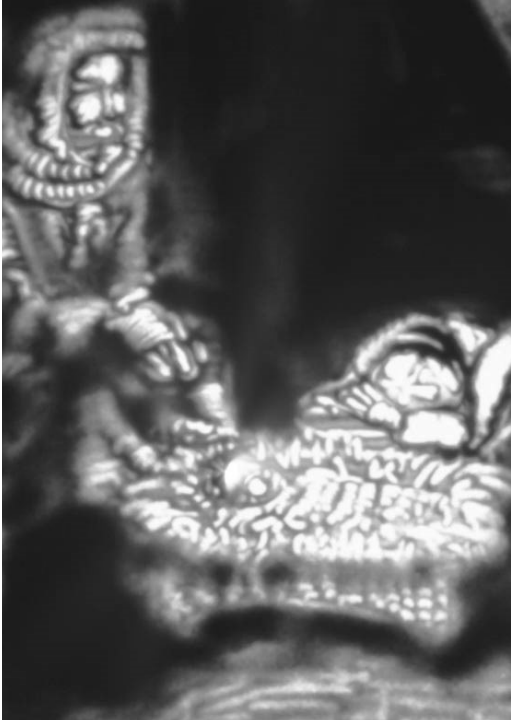
**Three-year Daily Bible Reading Program**

Here are the daily readings for the next two weeks:

|         |                    |         |                    |        |                  |
|---------|--------------------|---------|--------------------|--------|------------------|
| Dec. 23 | Isaiah 22:15–23:18 | Dec. 28 | Isaiah 30:18-32:20 | Jan. 2 | 1 John 2:3-27    |
| 24      | Isaiah 24, 25      | 29      | Isaiah 33, 34, 35  | 3      | 1 John 2:28-3:10 |
| 25      | Isaiah 26, 27      | 30      | Isaiah 36, 37      | 4      | 1 John 3:11-4:6  |
| 26      | Isaiah 28          | 31      | Isaiah 38, 39      | 5      | 1 John 4:7-5:3   |
| 27      | Isaiah 29:1-30:17  | Jan. 1  | 1 John 1:1-2:2     | 6      | 1 John 5:4-21    |

# Impact of the Incarnation

*New Worship Series Starting in January*  
**Wednesdays at 12:00 & 6:00 pm**



Impact of the incar-what? Incarnation means the taking on of flesh. In the church that's a word that tries to describe and summarize what happened when God became flesh in the person of Jesus. We've heard from Matthew and Luke during Christmas what that looked like from an earthly perspective. The gospel writer John offers a different perspective on the birth of Jesus in the first chapter of his book. It's more of a bird's eye view of the event, but it allows us to consider the impact of the incarnation of the Son of God. Join us on Wednesdays at 12:00 or 6:30 pm in January as we study John's unique perspective in which he highlights the impact of the incarnation.

## SCHEDULES

|   |   |  |
|---|---|--|
| <b>Ushers for Sat., Dec. 22, 5:00 pm:</b> Dennis Szymanski, Kelly Harrington, Pete Salamone |   |  |
| <b>Sun. Dec. 23</b>   | <b>8:00 am</b>  | <b>10:30 am</b>  |
| <b>Greeters</b>   | Gary & Debbie Kamin   | Kirk & Mary Jo Riege   |
| <b>Ushers</b>   | Jody Goede (O), Mike Manthe,<br>Tom Precia, Bob Leischer, David Fry     | Richard Zirbel (O), Craig Harstad,<br>Doug Bartsch, Mike Panno, Dan Zirbel |
| <b>Nursery</b>  | Jen Gorski  | Amanda Budzien   |
| <b>Coffee Hour</b>  | Dave & Sandy Gauerke, Dave &<br>Sherry Baehler, <i>Julie Lee (Bake)</i> | Jon & Tina Long, Zeynep AKman,<br>Ken & Donna Gehl                         |

| USHERS FOR CHRISTMAS SERVICES  |   |   |   |
|--|---|---|---|
| CHRISTMAS EVE, MONDAY, DECEMBER 24   |   |   | TUES., DEC. 25  |
| <u>MID-DAY</u>   | <u>CHILDREN'S</u>   | <u>CANDLELIGHT</u>  | <u>CHRISTMAS DAY</u>  |
| <u>12:00 pm</u>  | <u>4:00 pm</u>  | <u>11:00 pm</u>   | <u>9:30 am</u>  |
| Gary Hanke (O), Brad<br>Tessmann, John Johnson,<br>Dennis Szymanski,<br>Cory Loppnow | Steve Mulvey (O), Jerry<br>Houtler, Paul Berger,<br>Pete Salamone,<br>Glenn Neumann | Ron Morrow (O),<br>John Gilbert, Alex<br>Crucius, Mike Laabs,<br>Jack Willert | Glen Heuer (O), Dan<br>Hahn, Mark Ramthun,<br>Jon Erdman, Paul<br>Schroeder |

| No Worship Service on Saturday, December 29                                    |   |  |
|--|---|--|
| <b>Sun. Dec. 30</b>  | <b>8:00 am</b>  | <b>10:30 am</b>  |
| <b>Greeters</b>  | Doug & Clara Nettesheim   | Jared & Jennifer Dempsey   |
| <b>Ushers</b>  | Scott Polzin (O), Andrew Polzin,<br>David Baehler, Ray Bormann,<br>Freddy Netzlau | Glen Heuer (O), Dan Hahn,<br>Mark Ramthun, Jon Erdman,<br>Paul Schroeder |
| <b>Nursery</b>   | Carol Delie   | Kerry Andrews  |
| <b>Coffee Hour</b>   | Daryn & Jeannette Buss, Vicki Sowle,<br>Linda Lazarine                            | Brett & Jean Weed, Jerry<br>Breske, <i>Laura Hahn (bake)</i>             |
| <b>Ushers for New Year's Eve, Sat., Dec. 31, 5:00 pm:</b> Ken Gehl, David Reid |   |  |

**Pew Cleaning through Dec. 30:** Dale & Rhonda Harper, Kelly & Kathy Harrington  
**Altar Guild for December:** Judy Tetting, Sharon Manka

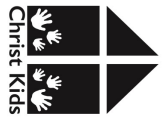
| LAST WEEK'S STEWARDSHIP   |                                   |                      |      |
|---------------------------|-----------------------------------|----------------------|------|
| <u>General Fund 2018</u>  | <u>2016-2018 Growing in Faith</u> | Current Membership:  | 1493 |
| Last Week: \$21,150       | Last Week: \$18,487               | Church Attendance:   | 965  |
| Fund to Date: \$1,057,604 | Appeal to Date: \$2,772,407       | Christian Education: | 258  |



We want to do everything we can to facilitate family worship here at Christ. We also want to enable parents with young children to have the opportunity to listen to the sermon. That's where Christ Kids comes in.

- During the 10:30 am service everyone will worship together until the sermon hymn.
- At the sermon hymn children ages 3-4 years will be invited to meet their Christ Kids teacher in the back of church and will be safely escorted to the Christ Kids classroom downstairs for Christ-centered learning and activities designed just for them!
- Following the service parents will pick their children up from the Christ Kids classroom.

Note: Christ Kids is an optional service offered to families. Child care during the whole service for children up to age 4 remains available for every Sunday worship service.



**Christ Kids** is offered for children ages 3-4 during the 10:30 am Sunday worship services. Parents, please fill out this card and give it to the Christ Kids teacher when you drop off your children. Please pick up your children at the end of the 10:30 am Sunday worship service.

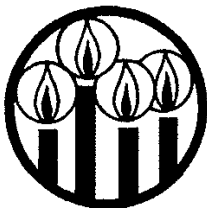
Parent(s): \_\_\_\_\_

Child(ren): \_\_\_\_\_

Phone: \_\_\_\_\_

#### SCREEN TEAM SCHEDULE

|                     |          |                  |                      |          |                |
|---------------------|----------|------------------|----------------------|----------|----------------|
| <b>Sat. Dec. 22</b> | 5:00 pm  | Sam Rasmussen    | <b>Tues. Dec. 25</b> | 9:30 am  | Mark/Rita Gall |
| <b>Sun. Dec. 23</b> | 8:00 am  | Nicole Nelson    |                      |          |                |
|                     | 10:30 am | Shelley Druckrey | <b>Sun. Dec. 30</b>  | 8:00 am  | Krista Paras   |
| <b>Mon. Dec. 24</b> | 12:00 pm | Eric Ulm         |                      | 10:30 am | Steve Bothe    |
|                     | 4:00 pm  | Jacob Fralick    | <b>Mon. Dec. 31</b>  | 5:00 pm  | Debbie Kamin   |
|                     | 11:00 pm | Olivia Gerbing   |                      |          |                |



**ABOUT THE COVER:** The little town of Bethlehem was “fruitful” (the meaning of *Ephrathah*) because the Lord deigned to be born there. The places where the Lord chooses to be present are life-giving because He is there. How often He chooses humble means to do amazing things! Every Sunday, by His Word and Sacraments, He joins His Word to simple things like water, bread, and wine to do the amazing acts of creating and sustaining faith.

**Christ Evangelical Lutheran Church**  
is a member of the  
**Wisconsin Evangelical Lutheran Synod**



# **Christ Evangelical Lutheran Church**

**W240 N3103 Pewaukee Road, Pewaukee, WI 53072**

*If we can be of service to you, please feel free to contact one of the people listed below:*

|   |  |
|---|--|
| Rev. Dr. Richard A. Krause, Senior Pastor:            | <a href="mailto:pastorkrause@christpewaukee.org">pastorkrause@christpewaukee.org</a>           |
| Rev. Timothy R. Gerbing, Discipleship Pastor:         | <a href="mailto:pastorgerbing@christpewaukee.org">pastorgerbing@christpewaukee.org</a>         |
| Rev. Richard H. Warnecke, Outreach Pastor:            | <a href="mailto:pastorwarnecke@christpewaukee.org">pastorwarnecke@christpewaukee.org</a>       |
| Rev. Thomas M. Engelbrecht, Assimilation Pastor:      | <a href="mailto:pastorengelbrecht@christpewaukee.org">pastorengelbrecht@christpewaukee.org</a> |
| Pastor Paul & Aneela, International Friendship Center | <a href="mailto:pastorpaul@christpewaukee.org">pastorpaul@christpewaukee.org</a>               |
| Rev. Dale R. Baumler, Visitation Pastor:              | <a href="mailto:dbaumler@wi.rr.com">dbaumler@wi.rr.com</a>                                     |
| Mrs. Andrea Valerio, Music Director:                  | <a href="mailto:avalerio@christpewaukee.org">avalerio@christpewaukee.org</a>                   |
| Mrs. Molly Brooks, Preschool Director:                | <a href="mailto:mbrooks@christpewaukee.org">mbrooks@christpewaukee.org</a>                     |
| Mr. Gary Kamin, Business Manager:                     | <a href="mailto:gkamin@christpewaukee.org">gkamin@christpewaukee.org</a>                       |
| Mrs. Alicia Ulm, Administrative Secretary:            | <a href="mailto:aulm@christpewaukee.org">aulm@christpewaukee.org</a>                           |
| Mrs. Barb Brandt, Administrative Assistant:           | <a href="mailto:office@christpewaukee.org">office@christpewaukee.org</a>                       |

Church Office Hours: 8:00 am – 3:00 pm, Monday – Friday

Phone: 262-691-0720 Email address: [office@christpewaukee.org](mailto:office@christpewaukee.org)

Church website: [www.christpewaukee.org](http://www.christpewaukee.org) Facebook page: [www.facebook.com/ChristPewaukee](https://www.facebook.com/ChristPewaukee)

WELS website: [www.wels.net](http://www.wels.net)